

DIAMOND[®]
DIAMOND CHAIN COMPANY

SAPPHIRE[®]
DIAMOND CHAIN COMPANY





TABLE OF CONTENTS 目录

Diamond Series 钻石系列

Standard Series 标准系列	4
Heavy Series 重型系列	4
Double Pitch 双节距	5
Power Transmission Chain 动力传动链	5
Conveyor Chain 传输链	5

Sapphire Series 蓝宝石系列

Standard Series 蓝宝石系列	6
Heavy Series 重型系列	6
Double Pitch 双节距	7
Power Transmission Chain 动力传动链	7
Conveyor Chain 传输链	7

Agriculture Chain 农用机械链条

S & C Type Chain S型和C型链条	8
AG Conveyor Chain 农机传输链	8
Citrus Chain 摘果机链	9
Cotton Module Chain 棉花采摘机链	9
Cornhead Gathering Chain 玉米收割机用链条	9

Agricultural Attachments 农用机械链条附件	10-14
-----------------------------------	-------

Every Calling is Great, When Greatly Pursued.

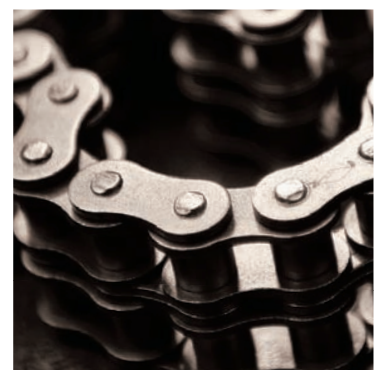
OLIVER WENDELL HOLMES

当努力追求时，每一个使命都是伟大的。



At the Diamond Chain Company, the calling to design and manufacture the world's highest-performing roller chain is greatly pursued every day by teams of passionate technical experts who have made your success their life's work. It's that intensity of focus that some of the world's greatest inventors trusted to provide the drive chains they needed to transform the world. From the Wright Brothers, to Henry Ford, to the global leaders of our time, Diamond® chain is the roller chain most trusted to perform, when performance matters most.

在美国钻石链条公司，设计和制造世界最优秀性能的滚子链条是我们技术专家们每天的致力追求。他们充满激情，将您的成功作为他们一生的工作目标！正是凭借对这份专注的信任，许多世界上最伟大的发明家都挑选了我们的产品作为他们改变世界所需的驱动链。从莱特兄弟到亨利福特，再到我们这个时代的全球工业领袖们 Diamond链条都是最值得他们信赖的滚子链条。



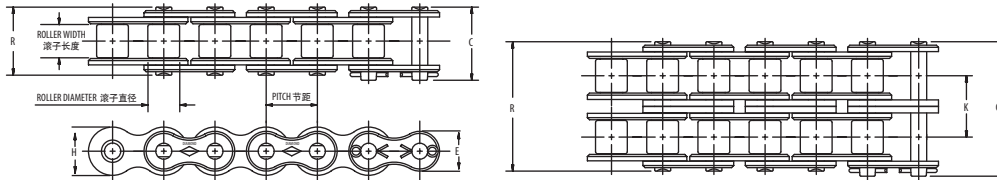
DIAMOND®

STANDARD SERIES CHAIN 标准系列链条

SINGLE AND MULTI-STRAND 单排和多排

Diamond Standard Series Chains are built to ASME / ANSI B29.1 standards for dimensions, interoperability, and sprocket fit and exceed the established standards for tensile strength.

钻石标准系列链条，尺寸，互用性，与链轮的配合都遵循ASME/ANSI B29.1标准生产，拉伸载荷甚至超过发行的标准要求。



ASME/ANSI 链号	Pitch 节距 mm	Roller Width 滚子长度 mm	Roller Diameter 滚子直径 mm	Pin Diameter 销轴直径 mm	Link Plate Thickness 链片厚度 mm	C mm	R mm	K 排距 mm	每米重量 kg/m	Average Tensile Strength 平均拉伸载荷 KN	E** 外链片高度 mm	H** 内链片高度 mm
35	13.28	4.76	5.08	3.58	1.27	14.22	12.70	...	0.313	9341	7.82	9.04
40	12.70	7.94	7.92	3.96	1.52	18.29	17.02	...	0.610	17793	10.41	12.07
40-2	12.70	7.94	7.92	3.96	1.52	32.77	31.50	14.38	1.191	35586	10.41	12.07
41	12.70	6.35	7.77	3.58	1.27	16.51	14.48	...	0.387	10676	7.87	9.73
50	15.88	13.28	10.16	5.08	2.03	22.61	21.08	...	1.048	29358	13.00	15.09
60	19.05	12.70	11.91	5.94	2.39	28.19	26.42	...	0.011	37810	15.62	18.11
60-2	19.05	12.70	11.91	5.94	2.39	51.05	49.28	22.78	0.022	75620	15.62	18.11
80	25.40	15.88	15.88	7.92	3.18	36.58	33.53	...	0.020	64499	20.83	24.13
80-2	25.40	15.88	15.88	7.92	3.18	65.79	62.74	29.29	0.039	128998	20.83	24.13
100	31.75	19.05	19.05	9.53	3.96	43.94	40.89	...	0.029	106757	26.04	30.18

*Chains are rollerless -- dimension shown is bushing diameter.

ASME/ANSI 60 and larger chains are available as cottered or riveted type design. Multiple strand chains are available with slip-fit (standard) or press-fit center plates.

** Maximum values are shown.

*对于无滚子链条-所示尺寸为套筒直径

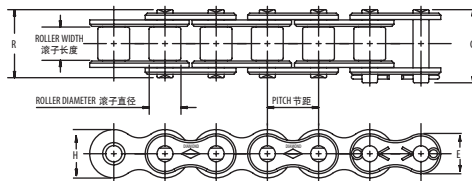
ASME/ANSI 60及以上的链条可以以销子或者铆钉连接的方式供货。多排链条可以以滑动配合或压入配合形式供货。

**显示的为最大值。

HEAVY SERIES CHAIN 重型系列链条

Diamond Heavy Series Chains are built to ASME / ANSI B29.1 standards and utilize link plates from the next larger size of chain. Heavy Series chains are intended for applications subject to heavy shock loads, starts and stops, and forward and reverse travel.

Diamond重型系列链条，也是依照ASME/ANSI B29.1标准生产，链片厚度采用的是标准系列下一级型号链条链片的厚度。重型系列链条主要应用在具有高冲击负载，反复开关或正反转动力装置的环境下。



ASME/ANSI 链号	Pitch 节距 mm	Roller Width 滚子长度 mm	Roller Diameter 滚子直径 mm	Pin Diameter 销轴直径 mm	Link Plate Thickness 链片厚度 mm	C mm	R mm	K 排距 mm	每米重量 kg/m	Average Tensile Strength 平均拉伸载荷 KN	E** 外链片高度 mm	H** 内链片高度 mm
60H	19.05	12.70	11.91	5.94	3.18	31.50	29.72	...	1.76	37812.00	15.62	18.11
80H	25.40	15.88	15.88	7.92	3.96	39.88	36.83	...	3.01	64502.82	20.83	24.13
100H	31.75	19.05	19.05	9.53	4.75	47.24	44.20	...	4.20	106763.28	26.04	30.18

ASME/ANSI 60 and larger chains are available as cottered or riveted type design. Multiple strand chains are available with slip-fit (standard) or press-fit center plates.

** Maximum values are shown.

ASME/ANSI 60及以上的链条可以以销子或者铆钉连接的方式供货。

多排链条可以以滑动配合或压入配合形式供货。

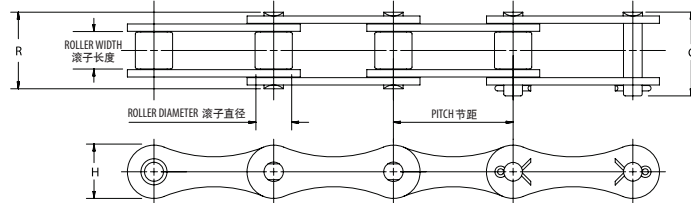
**显示的为最大值。

DOUBLE-PITCH POWER TRANSMISSION ROLLER CHAIN

双节距动力传动滚子链

These chains, produced to ASME/ANSI B29.3 standards, have figure-eight style link plates. Their dimensions are similar to Standard Series chains with the exception of the pitch, which is twice that of the Standard Series chains. The increase in pitch means that only half the number of component parts are required per foot which can significantly lower the cost. Typical uses for these types of chains include light load drives commonly found in agricultural machinery.

此类链条依照ASME/ANSI B29.3标准而制，具有8字型的链片。其尺寸除节距是标准系列链条的两倍外，其它均与标准系列链条相似。长节距表明每英尺链条只需要原来一半的零部件数量，从而大大节省了链条成本。这类链条通常被用于农机类的轻载荷动力装置上。



ASME/ANSI 链号	Pitch 节距 mm	Roller Width 滚子长度 mm	Roller Diameter 滚子直径 mm	Pin Diameter 销轴直径 mm	Link Plate Thickness 链片厚度 mm	C mm	R mm	每米重量 kg/m	Average Tensile Strength 平均拉伸载荷 KN	H* 内链片高度 mm
2040	25.40	7.94	7.92	3.96	1.52	19.30	17.27	0.417	16459	12.07
2050	31.75	9.53	10.16	5.08	2.03	23.37	21.34	0.774	27136	15.09
2060	38.10	12.70	11.91	5.94	2.39	28.19	26.67	1.071	37812	18.08

ASME/ANSI 60 and larger chains are available as cottered or riveted type design.

*Maximum values are shown.

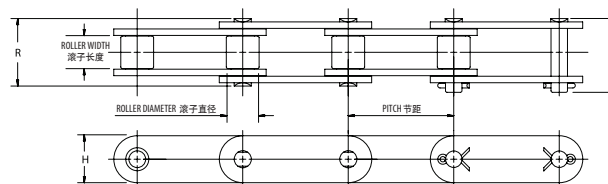
ASME/ANSI 60及以上的链条可以以销子或者铆钉连接的方式供货。

*显示的为最大值。

DOUBLE-PITCH CONVEYOR ROLLER CHAIN 双节距传输滚子链

Produced to ASME/ANSI B29.4 standards, these chains are used in conveyor applications when loads are low and speeds are moderate. They are similar to the Double-Pitch Power Transmission chains, but with link plates that have an oval contour, and can be produced with either standard or over-sized rollers. They are most often found working on conveyors of all shapes and sizes and can be supplied with one or more of our many attachments to carry or convey products.

此类链条依照ASME/ANSI B29.4标准而制，适用于中速低载荷的传输要求。这类链节与双节距传动滚子链相似，只是链片为椭圆形轮廓，可配有标准或大尺寸滚筒。它们一般被用在各种形状和尺寸的传送带上，并可以和一种或几种附件配合共用以运输或传输产品。



ASME/ANSI 链号	Pitch 节距 mm	Roller Width 滚子长度 mm	Roller Diameter 滚子直径 mm	Pin Diameter 销轴直径 mm	Link Plate Thickness 链片厚度 mm	C mm	R mm	每米重量 kg/m	Average Tensile Strength 平均拉伸载荷 KN	H* 内链片高度 mm
C2040	25.40	7.94	7.92	3.96	1.52	19.30	17.27	0.506	13901	12.07
C2042	25.40	7.94	15.88	3.96	1.52	19.30	17.27	0.744	13901	12.07
C2050	31.75	9.53	10.16	5.08	2.03	23.37	21.34	0.863	21709	15.09
C2052	31.75	9.53	19.05	5.08	2.03	23.37	21.34	1.205	21709	15.09
C2060H	38.10	12.70	11.91	5.94	3.18	28.19	29.97	1.563	31273	18.08
C2062H	38.10	12.70	22.23	5.94	3.18	28.19	29.97	2.113	31273	18.08

ASME/ANSI 60 and larger chains are available as cottered or riveted type design.

*Maximum values are shown.

ASME/ANSI 60及以上的链条可以以销子或者铆钉连接的方式供货。

*显示的为最大值。

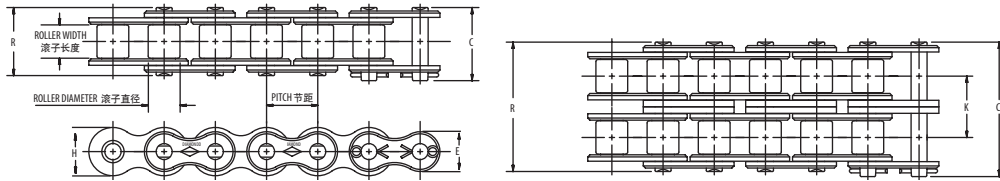
SAPPHIRE®

STANDARD SERIES CHAIN 标准系列链条

SINGLE AND MULTI-STRAND 单排和多排

Sapphire Standard Series Chains are built to ASME / ANSI B29.1 standards.

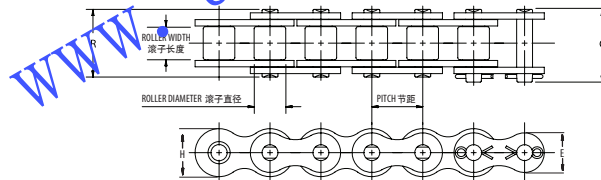
蓝宝石标准系列的链条是遵循ASME/ANSI B29.1标准制成。



ASME/ANSI 链号	Pitch 节距 mm	Roller Width 滚子长度 mm	Roller Diameter 滚子直径 mm	Pin Diameter 销轴直径 mm	Link Plate Thickness 链片厚度 mm	C mm	R mm	K 排距 mm	每米重量 kg/m	Average Tensile Strength 平均拉伸载荷 KN	E** 外链片高度 mm	H** 内链片高度 mm
35	13.28	4.76	*5.08	3.58	1.27	14.22	12.70	0.313	9341	7.82	9.04
40	12.70	7.94	7.92	3.96	1.52	18.29	17.02	0.610	17793	10.41	12.07
40-2	12.70	7.94	7.92	3.96	1.52	32.77	31.50	14.38	1.191	35586	10.41	12.07
41	12.70	6.35	7.77	3.58	1.27	16.51	14.48	0.387	10676	7.87	9.73
50	15.88	13.28	10.16	5.08	2.03	22.61	21.08	1.012	29358	13.00	15.09
50-2	19.05	12.70	11.91	5.94	2.39	28.19	26.42	1.473	37810	15.62	18.11
60	19.05	12.70	11.91	5.94	2.39	51.05	49.28	22.78	2.902	75620	15.62	18.11
60-2	19.05	12.70	11.91	5.94	2.39	51.05	49.28	22.78	2.902	75620	15.62	18.11
80	25.40	15.88	15.88	7.92	3.18	36.58	33.53	2.575	64499	20.83	24.13
80-2	25.40	15.88	15.88	7.92	3.18	65.79	62.74	29.19	5.015	128998	20.83	24.13
100	31.75	19.05	19.05	9.53	3.96	43.94	40.89	3.735	106757	26.04	30.18

*Chains are rollerless -- dimension shown is bushing diameter.
ASME/ANSI 60 and larger chains are available as cottered or riveted type design.
Multiple strand chains are available with slip-fit (standard) center plates.
** Maximum values are shown.

*对于无滚子链条-所示尺寸为套筒直径
ASME/ANSI 60及以上的链条可以以销子或者铆钉连接的方式供货。
多排链条可以以滑动配合或压入配合形式供货。
**显示的为最大值。



HEAVY SERIES CHAIN 重型系列链条

Sapphire Heavy Series Chains are built to ASME / ANSI B29.1 standards.

蓝宝石重型系列的链条也是遵循ASME/ANSI B29.1标准制成。

ASME/ANSI 链号	Pitch 节距 mm	Roller Width 滚子长度 mm	Roller Diameter 滚子直径 mm	Pin Diameter 销轴直径 mm	Link Plate Thickness 链片厚度 mm	C mm	R mm	每米重量 kg/m	Average Tensile Strength 平均拉伸载荷 KN	E** 外链片高度 mm	H** 内链片高度 mm
50H	15.88	9.53	10.16	5.08	2.39	21.84	23.62	1.18	26183.69442	13.0048	15.0876
60H	19.05	12.70	11.91	5.94	3.18	31.50	29.72	1.76	37811.995	15.621	18.1102
80H	25.40	15.88	15.88	7.92	3.96	39.88	36.83	3.01	64502.815	20.828	24.13
100H	31.75	19.05	19.05	9.53	4.75	47.24	44.20	4.20	106763.28	26.035	30.1752

ASME/ANSI 60 and larger chains are available as cottered or riveted type design.
Multiple strand chains are available with slip-fit (standard) center plates.
** Maximum values are shown.

ASME/ANSI 60及以上的链条可以以销子或者铆钉连接的方式供货。
多排链条可以以滑动配合或压入配合形式供货。
**显示的为最大值。

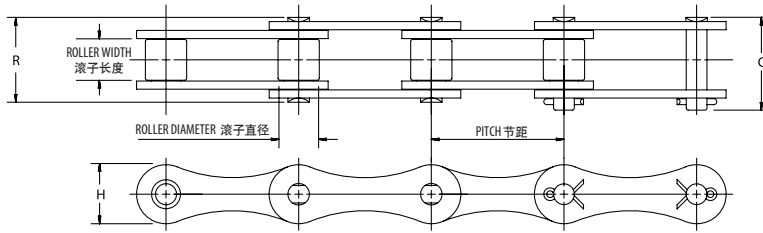
SAPPHIRE®

DOUBLE-PITCH POWER TRANSMISSION ROLLER CHAIN

双节距动力传动滚子链

Sapphire Double-Pitch Power Transmission Chains are built to ASME / ANSI B29.3 standards.

蓝宝石双节距动力传动链条是遵循ASME/ANSI B29.3标准制成。



ASME/ANSI 链号	Pitch 节距 mm	Roller Width 滚子长度 mm	Roller Diameter 滚子直径 mm	Pin Diameter 销轴直径 mm	Link Plate Thickness 链片厚度 mm	C mm	R mm	每米重量 kg/m	Average Tensile Strength 平均拉伸载荷 KN	H* 内链片高度 mm
2040	25.40	7.94	7.92	3.96	1.52	19.30	17.27	0.417	13901	12.07
2050	31.75	9.53	10.16	5.08	2.03	23.37	21.34	0.774	21709	15.09
2060	38.10	12.70	11.91	5.94	2.39	28.19	26.67	1.071	31273	18.08

ASME/ANSI 60 and larger chains are available as cottered or riveted type design.

*Maximum values are shown.

ASME/ANSI 60及以上的链条可以以销子或者铆钉连接的方式供货。

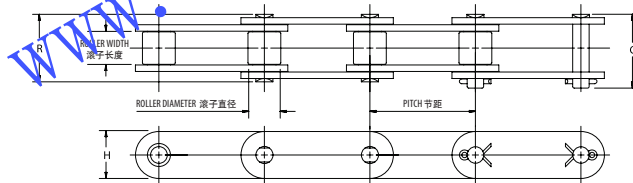
**显示的为最大值。

DOUBLE-PITCH CONVEYOR ROLLER CHAIN

双节距传输滚子链

Sapphire Double-Pitch Conveyor Series Chains are built to ASME / ANSI B29.4 standards.

蓝宝石双节距传输系列链条是遵循ASME/ANSI B29.4标准制成。



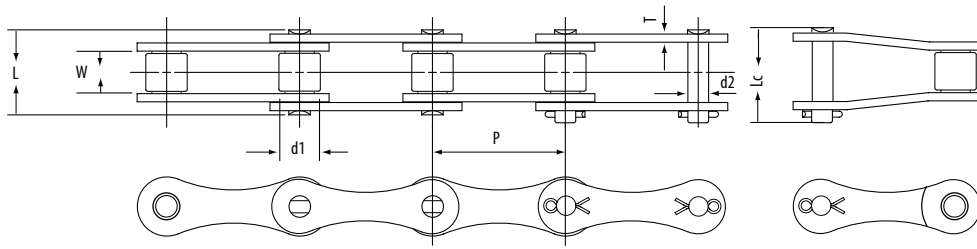
ASME/ANSI 链号	Pitch 节距 mm	Roller Width 滚子长度 mm	Roller Diameter 滚子直径 mm	Pin Diameter 销轴直径 mm	Link Plate Thickness 链片厚度 mm	C mm	R mm	每米重量 kg/m	Average Tensile Strength 平均拉伸载荷 KN	H* 内链片高度 mm
C2040	25.40	7.94	7.92	3.96	1.52	19.30	17.27	0.506	16459	12.07
C2042	25.40	7.94	15.88	3.96	1.52	19.30	17.27	0.744	16459	12.07
C2050	31.75	9.53	10.16	5.08	2.03	23.37	21.34	0.863	27136	15.09
C2052	31.75	9.53	19.05	5.08	2.03	23.37	21.34	1.205	27136	15.09
C2060H	38.10	12.70	11.91	5.94	3.18	31.75	29.97	1.563	37812	18.08
C2062H	38.10	12.70	22.23	5.94	3.18	31.75	29.97	2.113	37812	18.08

ASME/ANSI 60 and larger chains are available as cottered or riveted type design.

*Maximum values are shown.

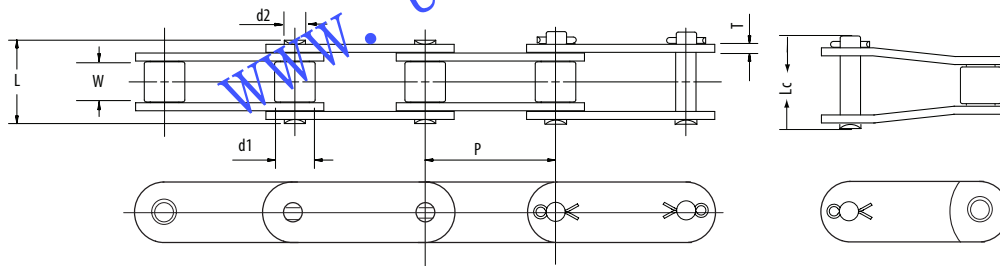
ASME/ANSI 60及以上的链条可以以销子或者铆钉连接的方式供货。

**显示的为最大值。



Part Number 链号	Pitch P 节距	Roller W min 滚子最小长度	Roller d1 max 滚子最大直径d1	Pin Diameter d2 max 销轴最大直径d2	Pin Length L max 销轴最大长度L	Pin Length Lc max 销轴最大长度Lc	Link Plate Height H 链片高度H	Link Plate Thickness T 链片厚度T	Average Tensile Strength 平均拉伸载荷
S321	3.810	15.875	11.430	4.470	26.391	27.991	13.411	1.803	22064
S421	9.525	19.507	14.275	7.010	34.290	37.008	19.710	2.794	50993
S451	16.002	22.225	15.240	5.842	37.694	40.411	17.196	2.794	37265
S521	12.700	22.225	15.240	5.842	37.694	40.411	17.196	2.794	37265
S551	16.002	22.225	17.780	5.842	37.694	40.411	17.196	2.794	37265
S621	16.510	25.400	19.050	5.842	40.310	43.002	17.196	2.489	37265
S772	7.544	22.225	18.263	8.915	43.205	46.406	26.187	3.988	73551
S882	15.469	28.575	22.860	8.915	49.809	53.010	26.187	3.988	73551
A550	41.402	19.812	16.866	7.188	35.611	39.446	20.193	2.692	53938
A620	42.012	24.511	17.907	7.188	42.189	45.187	20.193	2.692	58840

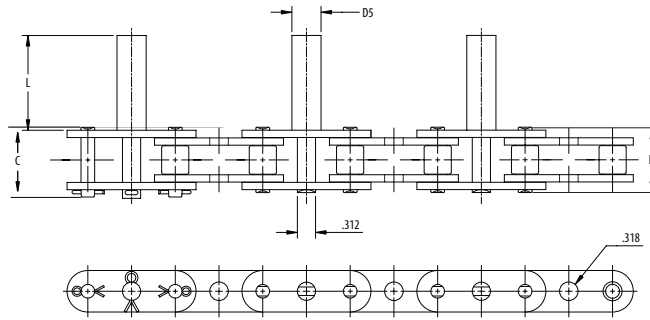
AGRICULTURAL ROLLER CHAIN 农用机械滚子链



Part Number 链号	Pitch P 节距	Roller W min 滚子最小长度	Roller d1 max 滚子最大直径d1	Pin Outer Diameter d2 max 销轴最大外径d2	Pin Length L max 销轴最大长度L	Pin Length Lc max 销轴最大长度Lc	Link Plate Height H max 链片高度H	Link Plate Thickness T 链片厚度T	Average Tensile Strength 平均拉伸载荷
CA550	41.402	19.812	16.866	7.188	35.662	38.760	20.193	2.692	53938
CA555	41.402	12.700	16.688	7.188	30.099	33.096	20.193	3.200	58840
CA557	41.402	19.812	17.805	8.001	37.389	40.589	22.301	3.200	73551
CA620	42.012	24.511	17.907	7.188	41.808	45.212	20.193	3.200	58840

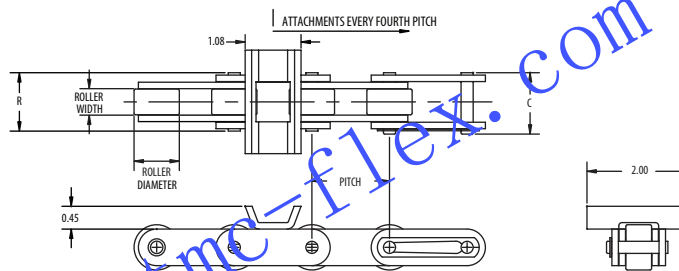
SAPPHIRE®

CITRUS ROLLER CHAIN 摘果机滚子链



Part Number 链号	Pitch 节距	Roller Width 滚子长度	Roller Diameter 滚子直径	Pin Diameter 销轴直径	C	R	DS	L	Link Plate Thickness 链片厚度	Minimum Tensile Strength 最小抗拉强度
C2060H-D5 Type 1 型号1	38.100	12.700	11.913	5.944	31.750	29.972	12.700	41.275	3.175	31273
C2060H-D5 Type 2 型号2	38.100	12.700	11.913	5.944	31.750	29.972	14.288	41.275	3.175	31273

COTTON MODULE ROLLER CHAIN 棉花采摘机滚子链



Part Number 链号	Pitch 节距	Roller Width 滚子长度	Roller Diameter 滚子直径	Pin Diameter 销轴直径	C	R	Link Plate Thickness 链片厚度	Minimum Tensile Strength 最小抗拉强度
C2062H	38.100	12.700	22.225	5.944	31.750	29.972	3.175	31273

CORNHEAD GATHERING CHAIN-STOCK ITEMS 玉米收割机

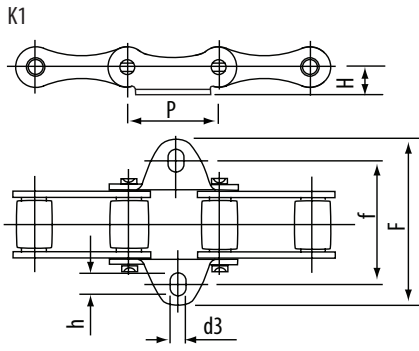
Part Number 链号	OEM CROSS-REFERENCE 参考链号			Chain/Attachment Technical Data 链条/附件 技术参数
	AGCO® 爱科®	John Deere® 强鹿®	International Harvester® 万国®	
CA555 C6E 48-8	—	AN102009	176279C91	page 12-13
CA550 C17E 50-6	71505705	—	—	page 11
CA550 C11E 57-7	573640	—	—	page 12
CA550 C17E 57-7	574793/591122	—	—	page 11

Any cornhead gathering chains not listed above are available Made-to-Order in most chain/attachment combinations. 上述未列出的任何玉米收割机用带附件链条大部分都可定制。

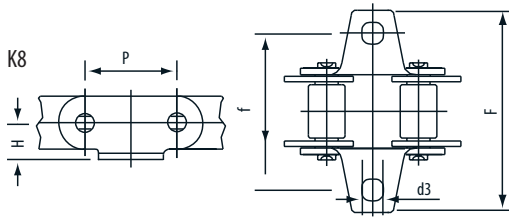
See page 10 – 13 or contact Diamond Chain for more information at 1-800-872-4246.

欲知详情, 请见第10-13页或拨打钻石链条电话0512-62653075

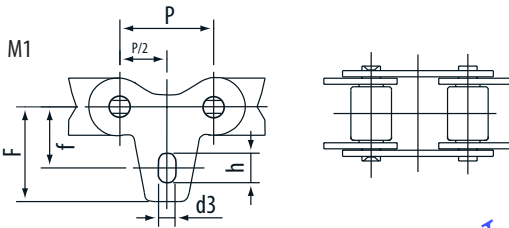
ATTACHMENTS 附件



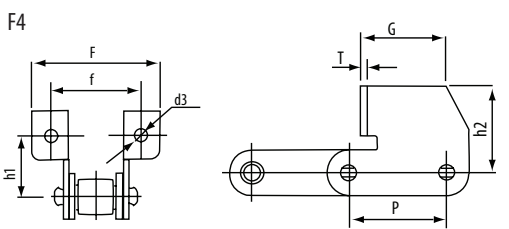
Part Number 链号	P	f	F	H	d3	h
S32	29.210	42.901	61.011	8.611	5.309	6.909
S42	34.925	53.924	74.905	13.995	8.306	11.506
S45	41.402	50.800	75.006	11.405	8.509	11.709
S52	38.100	58.801	78.003	11.405	8.306	9.906
S55	41.402	53.924	75.006	11.405	8.509	11.709
S62	41.910	66.802	95.402	11.405	6.502	13.005
S77	58.344	73.025	101.600	20.803	8.306	11.506
S88	66.269	95.301	119.405	20.803	8.306	9.906



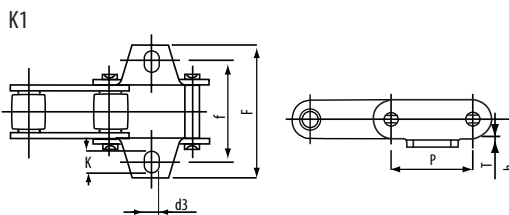
Part Number 链号	P	f	F	H	d3
CA550	41.402	50.800	76.200	12.700	6.706
CA550	41.402	54.204	76.200	12.700	8.306



Part Number 链号	P	f	F	h	d3
S32	29.210	42.901	61.011	8.611	5.309
S42	34.925	53.924	74.905	13.995	8.306
S45	41.402	50.800	75.006	11.405	8.509
S52	38.100	58.801	78.003	11.405	8.306
S55	41.402	53.924	75.006	11.405	8.509
S62	41.910	66.802	95.402	11.405	6.502
S77	58.344	73.025	101.600	20.803	8.306
S88	66.269	95.301	119.405	20.803	8.306

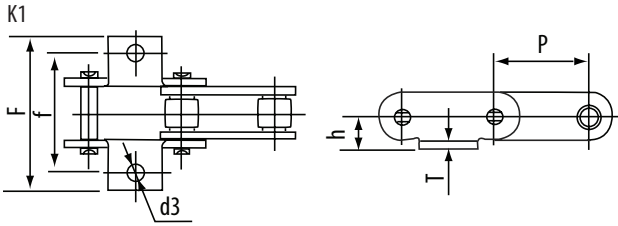


Part Number 链号	P	f	F	h1	h2	T	d3	G
CA550	41.402	47.600	68.301	30.988	42.901	2.692	8.306	36.906
S45	41.402	57.988	89.992	19.990	30.912	2.692	6.502	36.906
S5	41.402	57.988	89.992	19.990	30.912	2.692	6.502	36.906

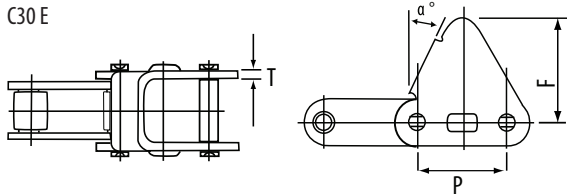


Part Number 链号	P	f	F	H	d3	K	T
CA550	41.402	54.991	76.987	14.554	8.306	10.592	2.692

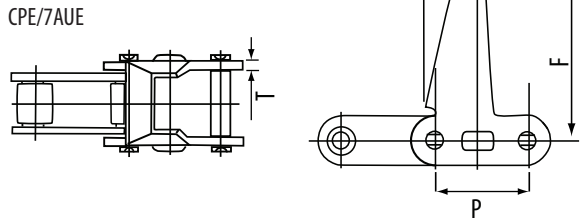
ATTACHMENTS 附件



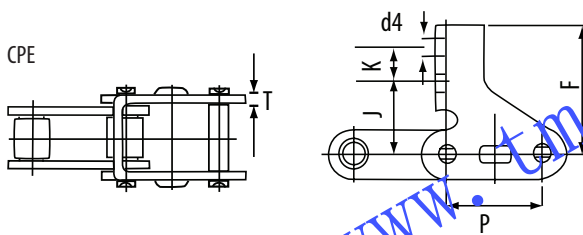
Part Number 链号	P	f	F	H	d3	T
CA620	42.012	62.713	80.188	11.506	6.756	3.200



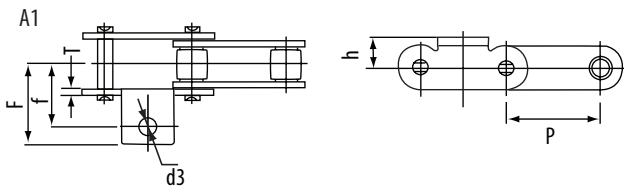
Part Number 链号	P	α°	T	F
CA550	41.40	2.8°	26.924	50.800



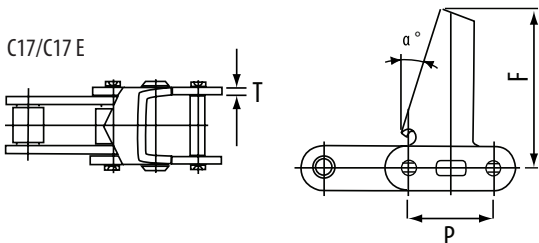
Part Number 链号	P	α°	T	F
CA550	41.402	17°	2.692	63.500
C2060H	38.100	22°	3.200	57.201



Part Number 链号	P	K	J	d4	T	F
C2060H	38.100	25.400	23.495	5.893	3.200	59.411



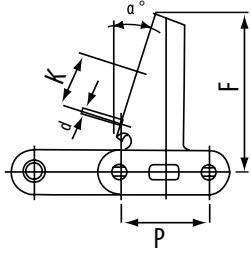
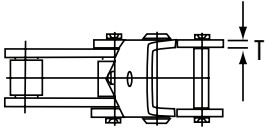
Part Number 链号	P	f	F	H	T	d3
CA620	42.012	31.344	40.107	11.506	3.200	3.759



Part Number 链号	P	α°	T	F
CA550	41.402	20°	2.692	76.200
C2060H	38.100	22.5°	3.200	58.699

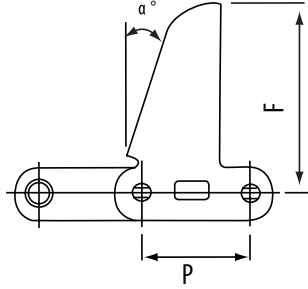
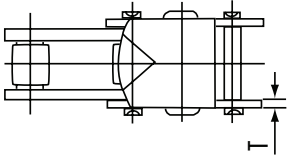
ATTACHMENTS 附件

C5E



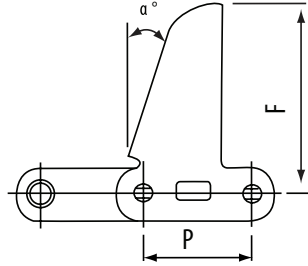
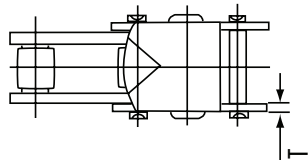
Part Number 链号	P	a°	T	F	d	K
C2060H	41.402	22.5°	3.200	57.201	8.509	29.997

C11E/C11



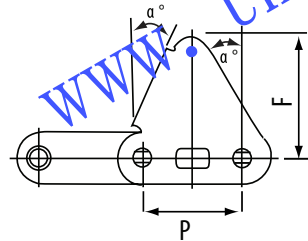
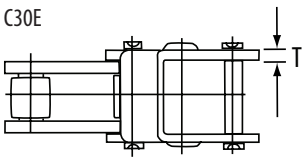
Part Number 链号	P	a°	T	F
CA550	41.402	15°/17°	2.692	63.500

C13E/C13



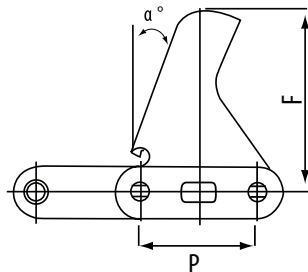
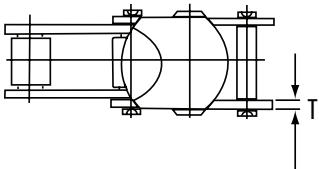
Part Number 链号	P	a°	T	F
CA550	41.402	17°	2.692	92.100
CA620	40.107	15°	3.200	91.999

C30E



Part Number 链号	P	a°	T	F
CA620	40.107	22.5°	3.200	58.699

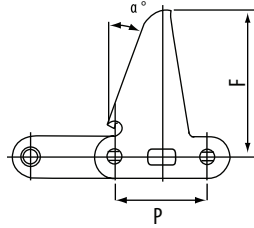
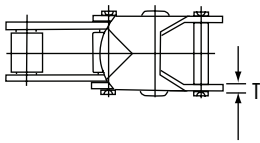
C6E



Part Number 链号	P	a°	T	F
C2060H	38.100	23°	3.200	63.500

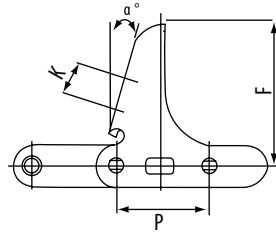
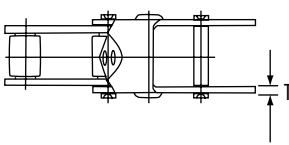
ATTACHMENTS 附件

C6E



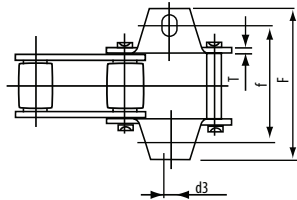
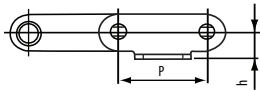
Part Number 链号	P	a°	T	F
CA555	41.402	15°	3.200	63.500

C6E



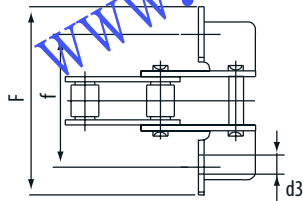
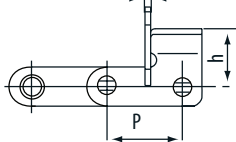
Part Number 链号	P	a°	T	F
CA550	41.402	15°	2.692	55.601

K19



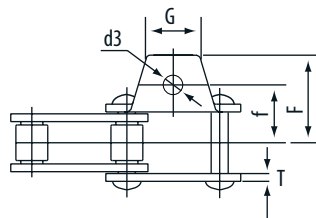
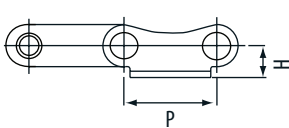
Part Number 链号	P	f	F	h	d3	T
CA550	41.402	50.800	71.399	12.700	6.756	2.692

F14/F1



Part Number 链号	P	f	F	h	d3	T
CA550	41.402	79.400	104.800	31.801	8.306	2.692

A19



Part Number 链号	P	f	F	h	G	d3	T
CA550	41.402	25.400	38.100	12.700	22.200	6.706	2.692